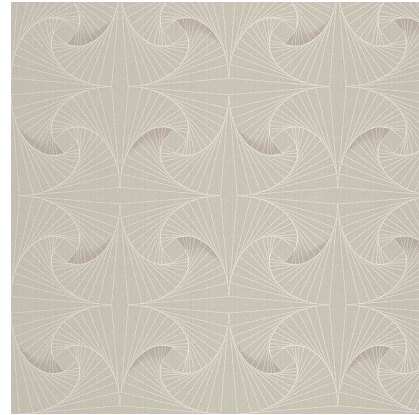


Model: SKINS PATTERN TARIAN TAUPE







Codes: 100307872

Group: G-201

Format: 53X1005CM



## FEATURES

-  Roll format
-  The adhesive must be applied on the support to be decorated (gluing the wall)
-  The rolls should be installed so that the pattern at end of the roll matches the pattern at the beginning of the next roll, creating a mirror effect
-  Allows for dry removal
-  Non woven paper
-  The duration of the warranty is that provided by the European Standard Warranty.
-  Very good color fastness to light
-  Can be carefully cleaned with a damp cloth

## ADDITIONAL NOTES

We recommend purchasing all the wallpaper you will need in the same order and production shade, since there will be slight changes in shade between the different dyes/lots.

## DIMENSIONAL FEATURES

Width	53 CM
Length	1005 CM
Thickness	259 µ

## LABORATORY TESTS

Flammability	B-s1,d0	EN 13501*
Formaldehyde emissions	<120 mg/kg	UNE-EN 15102:2019*
Migration of heavy metals and specific elements	PASS	UNE-EN 15102:2019*
Vinyl chloride monomer release	PASS	UNE-EN 15102:2019*
Content of specific hazardous substances	PASS	UNE-EN 15102:2019*
Perfluorooctane sulfonic acid (pfos) and its by-products	PASS	UNE-EN 15102:2019*
Weight	147 G/M2	EN ISO 536*
Permeability to 196 pa	52.3 L/(M2*S)	ISO 9237*
Dry tensile md	4671 N/M	ISO 1924-2*
Dry tensile cd	2924.7 N/M	ISO 1924-2*
Elongation md	5.2 %	ISO 1924-2*
Elongation cd	12.2 %	ISO 1924-2*



## PACKING

Sales units per box	63.918 M2/BOX	
Sales units per pallet	1917.54 M2/PAL	
Sales units per unit	5.3265 M2/PIECE	
Net weight	0.150192 KG/M2	
Sale unit	M2	
Base unit	ST	
Gross weight	0.168966 KG/M2	

